



GUILFORD
County Schools

SOAR TO GREATNESS

PREPARING OUR STUDENTS
for the World They Want to Live in



Annual Report
2021-22



Superintendent's Message

When our students envision the world they want to live in, they look to us to make it possible.

During my tenure with Guilford County Schools (GCS), I've listened to many students talk about their hopes and dreams. As I do, I'm always left with a clear and powerful thought.

Our young people have the ability to make great things happen for our community and our world — but they need us to help clear the way.

As we reflect on the last year, we must remind ourselves of what we have here in Guilford County:

- More than 68,000 students and families
- Nearly 10,000 faculty and staff members
- 126 schools
- 120 languages
- Families live in rural areas, suburban neighborhoods, and within our cities
- Advanced learners, exceptional children, first-generation and next-generation college students, and others are driven to head straight into a rewarding career or service in one of our fine branches of the military

No matter their next steps, our students have our guidance and care.

Since taking on the role of superintendent in 2016, I have been singularly focused on one goal: to improve life outcomes for every single student.

All of this energy and beauty, this challenge and opportunity, this potential — all of it is wrapped up in one county, with families and perspectives as diverse as the student body we so fervently serve.

I am grateful to every staff person, school leader, student, board member and community member who has worked to elevate what we're able to offer our students and families.

I wholeheartedly believe that our students rise to the expectations we set for them. They are our present and our future — talented and filled with promise. It is our job to unlock their potential. While this work is a long game requiring patience and fortitude, we've seen notable achievements along the way, and for those of us working directly in the schools, we see them every day. The accomplishments and improvements made across the district are the results of years of hard work by all staff and the community.

Moving on from Guilford County Schools is bittersweet. I feel deeply connected to and thankful for our school community — so proud of the progress we've made and enthusiastic about the future of this outstanding district. I know, at our core, we are the kind of community that wants to put in the hard work, is willing to seek connections, and advocate for the needs of all of our students, across every zip code, every socioeconomic level and every demographic.

I also want to remind each of us that our students are watching and we have an obligation to not only prepare them for the future but to ensure we model the type of service above self that enhances our lives individually and contributes to the overall well-being of the community.

The future our students hope for is one in which they can succeed while also lifting one another up. They want a world with improved collaboration and communication, greater problem solving and innovation. The achievements included in this annual report — and those that GCS will make possible in the coming years — are dedicated to our students and to our shared promise of preparing them for the world they want to live in.

For all children,

Sharon L. Contreras

Sharon L. Contreras, Ph.D.
Superintendent, Guilford County Schools

Fulfilling Our Promise

The initial strategic plan implemented under the leadership of Superintendent Contreras was entitled *Ignite Learning*. GCS has fulfilled that promise in partnership with talented, dedicated staff and the community through partnerships, community action and funding. The Guilford County community stepped up to show we are all committed to creating a better future for our students.

While we have fulfilled our promise to *Ignite Learning*, we are not finished. Sustained movement will occur as a result of ongoing commitments to our students, our people (staff), our schools, and ultimately our future. The following presents several accomplishments related to these commitments and we hope will inspire each of us to maintain our vigilant efforts to prepare our students for a world they deserve and want to live in.



CTE program community outreach event

Committed to our Students

Commitment to our students means providing EVERY student with access to great instruction and rigorous experiences that challenge them while simultaneously providing the support needed in a safe and healthy environment.

To do that we focused on intensive tutoring to accelerate learning through a pandemic, closing the digital divide by equipping our students with devices and our community with the infrastructure needed, providing access to learning outside of typical school hours by creating learning hubs, and providing experiences that connect classroom learning to real-world application through our unique Shift-ed and Career and Technical Education programs. We are also committed to the health of our students and piloted one-of-a-kind telehealth clinics in our schools.

Intensive Tutoring Program



421
TUTORS

5,251
STUDENTS

66,944.6
STUDENT
HOURS

109,176
STUDENT
SESSIONS

Learning Hubs

5,901
STUDENTS



signed up to accelerate learning
outside school hours with
certified teachers

\$800K
GRANT



from the Walton Family and the
Michael & Susan Dell Foundations

Closing the Digital Divide

79K+
DEVICES
purchased and
distributed to students
and instructional staff



124
"SMART"
BUSES
deployed to apartment
complexes, mobile home
parks, and communities
lacking broadband



2,411
MiFi
HOTSPOTS
provided to students



offered broadband
internet in community
centers and some
municipal buildings



Say Yes Guilford (Shift-ed) and Career and Technical Education (CTE)

FALL 2021 – 7th and 8th graders took **YouScience** Discovery assessment

WINTER 2022 – Students explored careers in **Mobile Innovation Lab**

SPRING 2022 – 8th graders “pitched” their entrepreneurial product, service, or good in a “**Shark Tank-like**” competition.



2020-21SY
2,966
CREDENTIALS
awarded

2021-22SY
7,118
CREDENTIALS
awarded



140%
increase in awarded credentials
from the previous year



Telehealth Clinics in Schools *Pilot Program at Bessemer Elementary*



**VIRTUAL
DOCTOR VISITS**
for students and parents
(at Bessemer Elementary)



300
PATIENTS
seen since the clinic opened



240
STUDENTS
seen at clinic returned to
school on the same day

PARTNERS & SPONSORS



**CONE
HEALTH®**
Health Partner

James B. Duke
THE DUKE ENDOWMENT

Grant Support



Student Learning Gains

Our commitments have produced unprecedented results for our students. Preliminary state accountability data show students and schools saw learning gains compared to 2020-21. Some schools had preliminary 2021-22 performance composites that were at or above pre-COVID levels (2018-2019).

Awards



#1 in NC Rankings



#2 in NC Rankings



#5 in NC Rankings



#8 in NC Rankings

BEST

& WORLD REPORT

U.S. News

RANKINGS

TRIAD BUSINESS JOURNAL

ACCESS ALL ARTICLES

BECOME A MEMBER

Guilford County schools earn top two spots, four of top 10 in U.S. News' ranking of NC high schools

[Email](#)
[f Share](#)
[in Share](#)
[Tweet](#)
[Print](#)
[Order Reprints](#)

By Daniel Finnegan - Managing Editor, Triad Business Journal
May 2, 2022

Guilford County schools earned the top two spots in [U.S. News & World Report's 2022 rankings](#) of North Carolina high schools and four of the top 10.

The Early College at Guilford held onto the No. 1 spot in North Carolina for the fourth straight year, and The Early College at North Carolina A&T moved up to the No. 2 spot after coming in third last year.

Philip J. Weaver Ed Center came in at No. 5 in the N.C. rankings, giving Greensboro schools three of the top five spots.

Penn-Griffin Schools in High Point ranked eighth.

All four public schools are part of the Guilford County School System.



Outstanding Students



21

STUDENTS
were 2020-2021 National
Merit Scholarship program
finalists



40

STUDENTS
selected for 2022
Governor's School of
North Carolina*



2.1M

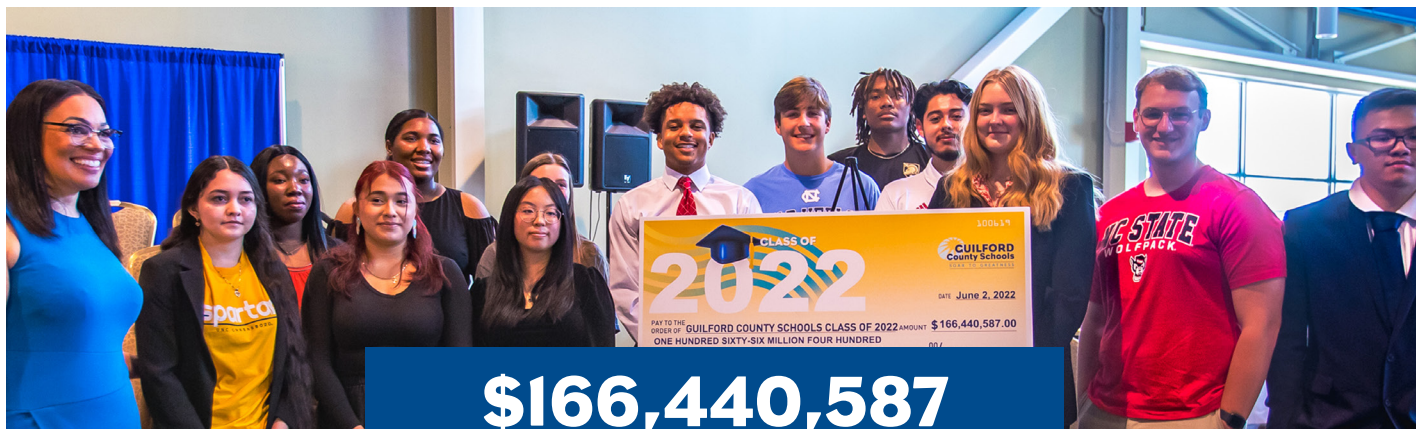
**STUDENT SERVICE
LEARNING HOURS**

more than \$51 million in
economic impact



91.5%

**GRADUATION
RATE**
2021



\$166,440,587

scholarships and grants awarded to
the Class of 2022

**the nation's oldest statewide summer residential program for academically gifted students*

Committed to Our People

Our commitment to our people is highlighted by the improvements to competitive compensation and the timely professional learning our staff deserves. Guilford County Schools prides itself on recruiting and retaining excellent staff from teachers to principals, central office employees, bus drivers, paraprofessionals, cafeteria workers and custodians.

GCS educators demonstrate leadership in the classroom, preparing students to succeed in higher education, or in the career of their choice. Educators also compassionately and generously model character and service as we focus on educating the whole child through exciting, engaging and challenging educational offerings.



GCS Summer Learning Institute for Leaders

Outstanding Educators



763 | National Board Certified Teachers

#9 ranking in the United States

2022 AASA Women in School Leadership Award

Superintendent Dr. Sharon L. Contreras received the Superintendent Award as part of the AASA's 2022 Women in School Leadership Award.

Burroughs Wellcome Fund North Carolina Teacher of the Year

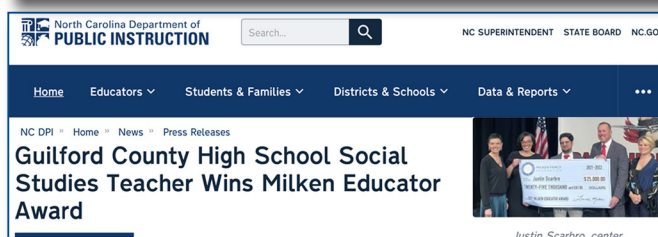
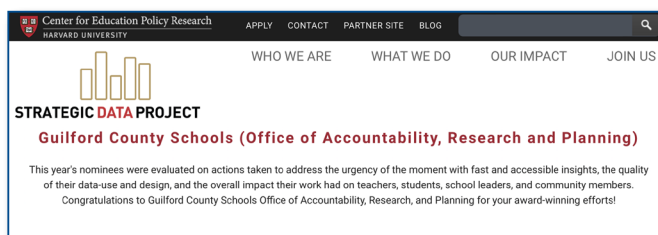
GCS Teacher of the Year Leah Carper received the 2022 award.

Regional Finalist for Principal of the Year

GCS Principal of the Year KaTrinka Brown recognized in the top levels of the Piedmont-Triad Region.

Milken Educator Award

GCS Teacher Justin Scarbro received the 2022 award. Also known as the "Oscars of teaching."



Competitive Compensation



PAY INCREASES FOR ALL STAFF

for the 2021-2022 and 2022-2023 school years
GCS has advocated for and been instrumental in the adoption of state budgets with pay raises.



The Board of Guilford County Commissioners

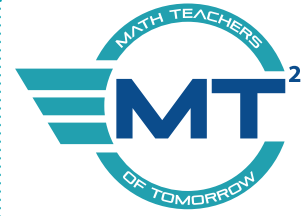
INCREASED SUPPLEMENTS

↑ **\$10M** TEACHERS
↑ **\$2M** PRINCIPALS
↑ **\$1.2M** ASSISTANT PRINCIPALS



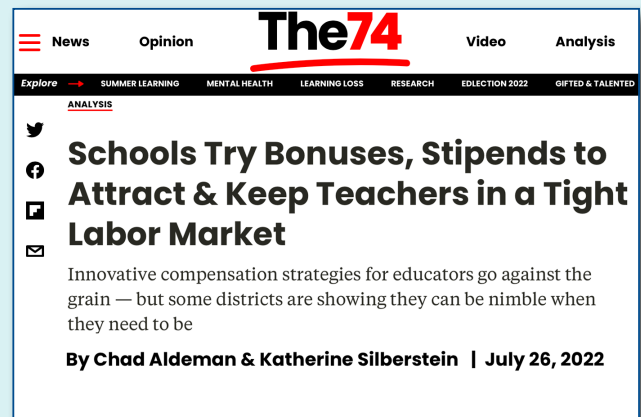
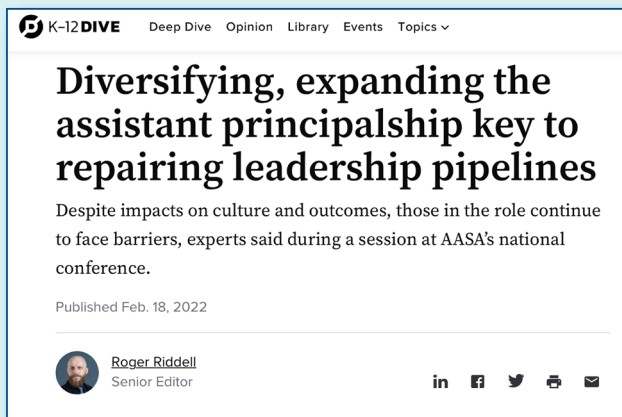
\$10K SIGNING BONUSES

for new teachers in hard-to-fill positions such as math, science, exceptional children, and career and technical education (CTE) positions.



INNOVATIVE PARTNERSHIP

with the University of NC at Greensboro to
TRAIN 42 INDIVIDUALS
to teach secondary math in GCS.



Professional Learning

Targeted Support for Struggling Students

MTSS staff training helped participants learn effective strategies to support struggling learners.

Ending the Silence Training

Helped educators learn how to recognize the signs and symptoms of mental health conditions.

Mental Health Toolkit

Designed as a resource for school mental health support for students.

Trauma Informed Care Training

Introduced the concepts and implementation of trauma informed care in schools.

Suicide Intervention staff Training

Taught participants how to help those who are suicidal.

Youth Mental Health First Aid Training

Provided skills to identify, understand and respond to the signs of mental illness and substance use disorders in youth.

Student Drug and Alcohol Abuse Training

Helped educators understand their role in and response to substance abuse issues involving students.

Sexual Assault Training

Guilford County Schools is leading the state in taking a proactive approach to prevent sexual assault and protect children who may be abused.

The district is partnering with the North Carolina Coalition Against Sexual Assault on a series of training for all teachers, administrators and instructional support staff.

Committed to Our Schools

Commitment to our students means providing EVERY student with access to great instruction and rigorous experiences that challenge them while simultaneously providing the support needed in a safe and healthy environment.

To do that we focused on [intensive tutoring](#) to accelerate learning through a pandemic, [closing the digital divide](#) by equipping our students with devices and our community with the infrastructure needed, providing access to learning outside of typical school hours by creating [learning hubs](#), and providing experiences that connect classroom learning to real-world application through our unique [Shift-ed and Career and Technical Education](#) programs. We are also committed to the health of our students and piloted one-of-a-kind [telehealth clinics](#) in our schools.

Outstanding Schools

48
MAGNET/CHOICE SCHOOLS
with 66 programs

258
CAREER & TECHNICAL EDUCATION (CTE)
courses offered in
49 schools

including artificial intelligence, nursing, drone supply chain and logistics, advanced manufacturing, culinary arts, aviation, and engineering, among others.

Early College at
Guilford

#1

IN NORTH CAROLINA
for third year
in a row

and jumped up 11 spots to 20th best school in the country. Ranked the second-best STEM high school in the nation.

19
STATE SCHOOLS OF CHARACTER

13
NATIONAL SCHOOLS OF CHARACTER
since 2014

2
NATIONALLY RECOGNIZED
visual and
performing-arts
high schools

School Construction Bonds

After passing the \$300 million school construction bond in 2020, Guilford County voters said YES to a \$1.7 billion school bond, the largest in North Carolina history, as an investment in the future of our children and our county.

Economic Impact

According to a 2020 study by North Carolina State University, a bond investment can have the following potential impacts:



23K
LOCAL JOBS
in Guilford County



\$1B
SAVINGS
in public safety and health care



\$100M+
INCREASE
in local property values

Committed to our Future

During the Groundbreaking Ceremony at Kiser Middle School, Principal Edward “Teddy” Wohlgemuth said, “I can’t wait to provide the students of this community the best possible environment to learn and the teachers the best possible place to work for many generations to come.” Guilford County Schools students, staff and the voters of Guilford County began to see the fulfillment of the vision of Superintendent Dr. Sharon Contreras with six groundbreaking events for new schools on August 22 and 23, 2022. Witnesses to the historic event were students, staff, alumni, community members and elected officials.



New Facilities

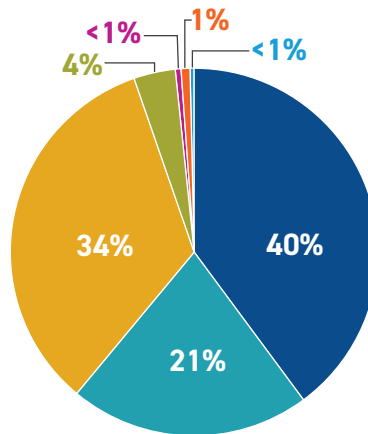
Six Unique, Innovative and State of the Art Learning Opportunities for Students to dare to dream of a bright future.

- Kiser Middle School
- Claxton Elementary School
- Brooks Global Studies
- Foust Robotics & Gaming Magnet School
- Peck K-8 Expeditionary Learning School
- Visual and Performing Arts Elementary School

Dr. Contreras galvanized the community and elected officials through her leadership to make improving school facilities a top priority. She shined the light on the disrepair of schools, creating the Joint Capital/Facilities Committee, including members of the Guilford County Board of Commissioners and the Guilford County Board of Education. Jointly, and with the support of the Guilford County community, who overwhelmingly voted yes to a \$1.7 billion bond referendum on the ballot in 2022, coupled with the \$300 million bond referendum approved by voters in 2020, six new schools will open in the fall of 2024. These schools are an investment in the future of Guilford County, creating the next chapter for students, staff and the community for decades to come.

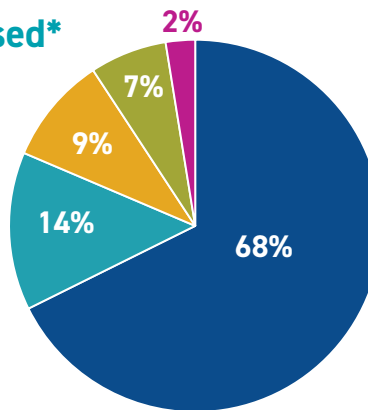
Budget

Where the Money Comes From (2021-22)



- State Funds – \$440,083,648
- Local (County) Funds – \$233,741,181
- Federal Funds – \$371,678,426
- School Food Services – \$40,341,500
- ACES – \$5,569,942
- Local Special Revenue – \$8,612,708
- Capital Outlay – \$4,000,000

How the Money is Used* (2021-22)



- Salaries and Benefits – \$707,531,493
- Purchased Services – \$143,564,930
- Supplies & Materials – \$97,777,424
- Equipment – \$5,569,942
- Transfers – \$26,652,996

*Local, State and Federal funds only

Guilford County Board of Education Members, Districts, and Contact Information



District 1
T. Dianne Bellamy Small
336.580.4655
bellamysmall@gcsnc.com



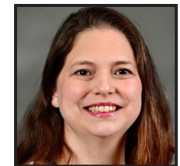
District 2
Anita Sharpe
336.294.5238
sharpeaw@hotmail.com



District 3
Pat Tillman
336.580.9270
tillmap@gcsnc.com



District 4
Linda Welborn
336.674.8504
welborl@gcsnc.com



District 5
Deborah Napper
336-202-2139
napperd@gcsnc.com



District 6
Khem Irby
336-402-3967
irbyk@gcsnc.com



District 7
Bettye Taylor Jenkins
336-214-4142
jenkinb2@gcsnc.com



District 8
Deena A. Hayes
336.690.9516
hayesd@gcsnc.com



Winston McGregor
Vice-Chair At-Large
336-279-6585
mcgregw@gcsnc.com



Dr. Sharon L. Contreras
Superintendent
336.370.8992
superintendent@gcsnc.com



fb.com/GCSchoolsNC



[@GCSchoolsNC](https://twitter.com/GCSchoolsNC)



[@gcschoolsnc](https://www.instagram.com/gcschoolsnc)



GCSTV
Spectrum Cable digital channel 2 or
74.1 in Guilford County, Channel 99
on AT&T U-Verse, YouTube



[https://www.youtube.com/user/
gcschoolsnc](https://www.youtube.com/user/gcschoolsnc)

In compliance with federal law, Guilford County Schools administers all educational programs, employment activities, and admissions without discrimination because of race, religion, national or ethnic origin, color, age, military service, disability, or gender, except where exemption is appropriate and allowed by law. Refer to the Guilford County Board of Education's Discrimination Free Environment Policy AC for a complete statement. Inquiries or complaints should be directed to the Guilford County Schools Compliance Officer, 120 Franklin Boulevard, Greensboro, NC 27401; 336-370-8154.

All Guilford County Schools facilities, both educational and athletic, are tobacco-free learning environments.

© 2022 Guilford County Schools.

712 North Eugene Street | Greensboro, NC 27401 | 336.370.8100

